

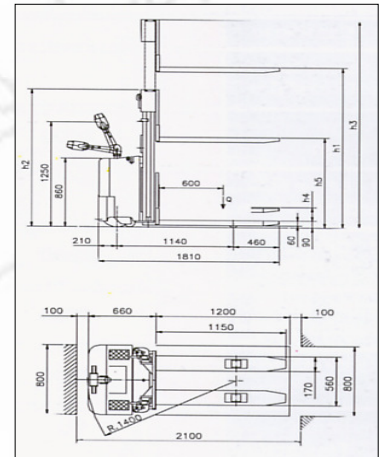
## CP16 & CP20 Heavy Duty Stackers

The CP16 & CP20 are heavy duty stackers, intended for the most demanding of applications with many options to suit every application.

- Capacity 1600 & 2000 Kg.
- Lift heights from 1600 to 3600 mm.
- Duplex mast configuration allows good sight through the mast uprights.
- Built-in battery charger means that the truck can be charged from any convenient mains socket.
- Ergonomic drive controls.
- Heavy duty traction battery for 8 to 9 hours continuous work even when negotiating inclines.
- Smooth stepless drive controls.
- Trucks carry CE mark and comply with



Other lift heights and mast configurations are available... Just ask.



Note: CP16 model shown above, The body length on CP20 models increases to 700mm

Model		CP 16.16	CP 16.24	CP 16.28	CP 16.32	CP 16.36	CP 20.28	CP 20.36
Capacity To 2000 mm	Kg	1600					2000	
Capacity To Full Lift Height (H1)	Kg	1600	1400	1200	1000	800	1600	1000
At Load Centre	mm	600						
Wheels		Polyurethane						
Lift Height (H1)	mm	1600	2400	2800	3200	3600	2800	3600
Freelift (H4)	mm	160						
Optional Freelift (H5)	mm	-	1200	1400	1600	1800	1400	1800
Closed Mast Height (H2)	mm	2000	1700	1900	2100	2300	1900	2300
Open Mast Height (H3)	mm	2000	2800	3200	3600	4000	3200	4000
Mast Configuration		Simplex	Duplex				Duplex	
Speeds Laden/unladen	Drive Km/h	Km/h		4.5 / 6.0				
	Lift cm/sec	Cm/sec		10 / 17				
	Lower cm/sec	Cm/sec		20 / 13				
Maximum Gradient Laden / Unladen	%	8 / 13						
Wheels	Load Roller	mm		80 x 90				
	Rear Wheels	mm		150 x 54				
	Drive Wheel	mm		200 x 85				
Brake		Electromagnetic						
Battery	V / Ah	24 / 240						
Charger	V / A	24 / 30						
Drive Motor	kW	1.2						
Lift Motor	kW	2.2						
Truck Weight With Battery	Kg	680	760	780	800	820		

**H.E.S.**  
HANDLING EQUIPMENT SALES LTD.

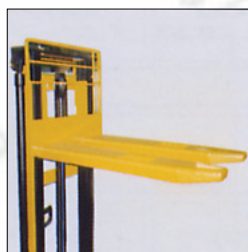
Tel: 01525 717174  
Fax: 01525 717140

info@hesales.co.uk  
www.hesales.co.uk

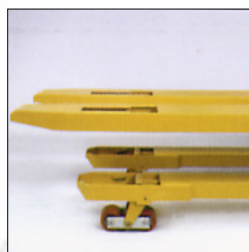
Options



Straddle Legs  
FEM Class II Carriage



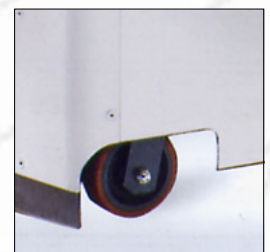
Full Freelift Masts



Lifting Forks



Rider Platform



Galvanised Chassis