

RECORD

Materials Handling Equipment

CPC15 Heavy Duty Fully Powered Stacker



CPC1546

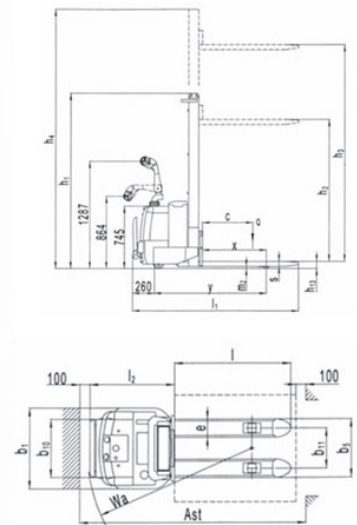


CPC1546 S

- Model: CPC1529, CPC1536 + CPC1546, Capacity 1500kg
- Standard Lift Heights from 2815mm to 4515mm. Special models available to order with lift heights of 4915mm + 5415mm.
- The CPC15 is a fully powered stacker that provides smooth travel and lift with easy to operate controls.
- High quality hydraulic pump assures very little noise, maximum efficiency and durability.
- Lift limit switch operates at maximum lift height to shut off pump motor.
- Electromagnetic braking that is spring applied and electrically released.
- Speed automatically reduces when driving with fork raised at or above 12".
- The CURTIS electronic controller helps provide plenty of low end torque while increasing the motor and battery life.
- Excellent stability in operation.
- Optional extras: Side Protection bars and foot plate
- Also available as Straddle leg version (CPC15 S)



CPC1529/36



Model		CPC1529	CPC1536	CPC1546	CPC1546 S
Capacity	Kg	1500			
At load centre	mm	600	600	600	600
Wheels	mm	polyurethane			
Lift Height (h2)	mm	2815	3515	4515	4550
Freelift	mm	1430	1780	1505	1505
Closed Mast Height (h1)	mm	1950	2300	2105	2183
Open Mast height (h3)	mm	3370	4070	5115	5245
Width over forks	mm		575		220-700
Fork Length	mm	1150			
Overall Width	mm	795		915	915
Overall Length	mm	2022		2065	1920



H.E.S

HANDLING EQUIPMENT SALES LTD.



Tel: 01525 717174



Fax: 01525 717140

info@hesales.co.uk



www.hesales.co.uk